

University Council Minutes
November 1, 2021
3:30 PM
1045 Pamplin Hall

Present: Tim Sands (presiding), April Myers, Cyril Clarke Dwayne Pinkney, Ken Miller, Julie Farmer for Charles Phlegar, Bryan Garey, Scott Midkiff, Susan Short for Guru Ghosh, Kim O'Rourke, Frank Shushok, Michael Friedlander, Daniel Sui, Lance Collins, Menah Pratt-Clarke, Lisa Wilkes, Jon Clark Teglas for Chris Kiwus, Lynsay Belshe, Chris Yianilos, Alan Grant, Daniel Givens, Laura Belmonte, Rosemary Blieszner, Ron Fricker, Julia Ross, Robert Sumichrast, Aimée Surprenant, Kelly Oaks, John Benner, Sean Corcoran, Robert Weiss, Gabby McCollum, Robin Queen, Jeffrey Alwang, Marcía Feuerstein, Janice Austin, Carla Finkielstein, Susan Anderson, France McCarty, Evan Lavender-Smith, Masoud Agah, Diane Agud, A.K. Ward Bartlett, Megan Wawro, Kathy Lu, David Tegarden, Kevin Davy, Paul Morton, Andre Muelenaer, Inga Haugen, Melissa Chase, Holli Gardner Drewry, Karen Eley Sanders, Jennifer Earley, Nicole Akers, Sue Teel, Jenny McCoy, Judy Alford, Alice Fox, Matthew Flores, Nicole Nunoo, Alex Pomeroy, Serena Young, Phil Miskovic, & Paolo Fermin

Absent with notice: Bruce Harper & Tamarah Smith

Absent: Steve McKnight, Paul Winistorfer, Lee Learman, Tyler Walters, LaTawnya Burleson, Ariana Guevara, Laszlo Horvath, David Dugas, Patricia Raun, Amanda Coleman, Amanda Leckner, D'Arrin Calloway, Miles Guth, Sharan Patnik, & Adyan Ati

Guests: Lori Buchanan, Caroline Lohr, Jeremy Brown, Jack Leff, Charlene Casamento, Kim Daniloski, Sally Shupe, Dee Harris, Kari Evans, Rachel Holloway, Debbie Greer, Tara Frank, Luisa Havens Gerardo, Anya Work, Catrice Barnes, Brittany Rasmussen, & Eric Kaufman

Dr. Sands called the hybrid meeting to order at 3:30 p.m. A quorum was present in person or via Zoom.

1. Adoption of Agenda

A motion was made and seconded to adopt the agenda. The motion carried.

2. Announcement of approval and posting of minutes of October 4, 2021

(Note: The October 18, 2021, meeting was cancelled.)

Dr. Sands noted that these minutes have been voted on electronically and can be publicly accessed on the Governance Information System on the Web (<http://www.governance.vt.edu>).

3. New Business

**Commission on University Support
Resolution CUS 2021-22A**

Resolution to Change Membership to the Transportation and Parking Committee

John Benner presented the resolution for first reading. This resolution adds an additional member to the Transportation and Parking Committee from the disability community to be selected by the Office of Equity and Accessibility or the Virginia Tech Disability Alliance and Caucus if the Office of Equity and Accessibility is unable to provide a representative. It was suggested that clarification is needed regarding the process that will be followed for selecting this new member and the need to be consistent with the appointment process for members of other committees in the governance system. Kim O'Rourke indicated that typically for each committee member vacancy, the president is provided with two nominations from which he appoints one to the committee. Kelly Oaks indicated that it was her understanding that an earlier version of the proposal was to

add two representatives to the Transportation and Parking Committee, one selected by the Office for Equity and Accessibility and one from the Virginia Tech Disability Alliance and Caucus. Benner responded that this was discussed at the last Commission on University Support meeting before the vote was taken. This resolution will be revised prior to the second reading on November 15, taking the requested changes into consideration.

4. Announcement of Approval and Posting of Commission Minutes

These minutes have been voted on electronically and will be posted on the University web (<http://www.governance.vt.edu>). Note that the purpose of voting on Commission minutes is to accept them for filing. University Council Bylaws require that policy items be brought forward in resolution form for University Council action.

- Commission on Equal Opportunity and Diversity
September 21, 2021
- Commission on Faculty Affairs
September 24, 2021
October 8, 2021
- Commission on Graduate and Professional Studies and Policies
September 15, 2021
- Commission on Outreach and International Affairs
September 16, 2021
- Commission on Research
September 9, 2021
- Commission on Staff Policies and Affairs
September 28, 2021
- Commission on Undergraduate Studies and Policies
September 13, 2021
September 27, 2021

5. Presentation

Dr. Daniel Sui, Vice President for Research and Innovation, gave a presentation (attached) on the history and characteristics of members of the Association of American Universities (AAU).

6. Adjournment-

There being no further business, a motion was made to adjourn the meeting at 4:28 p.m.



VIRGINIA TECH ASSOCIATION OF AMERICAN UNIVERSITIES STRATEGY

Daniel Sui

Nov. 1, 2021



1

Founding Members of AAU

- Harvard University, first president of AAU
- University of Chicago
- Columbia University
- The Johns Hopkins University
- University of California, Berkeley

- Princeton University
- Stanford University
- Yale University
- Cornell University
- University of Pennsylvania
- University of Michigan
- University of Wisconsin-Madison
- The Catholic University of America
- Clark University



Association
of American
Universities
Inquiry · Innovation · Impact

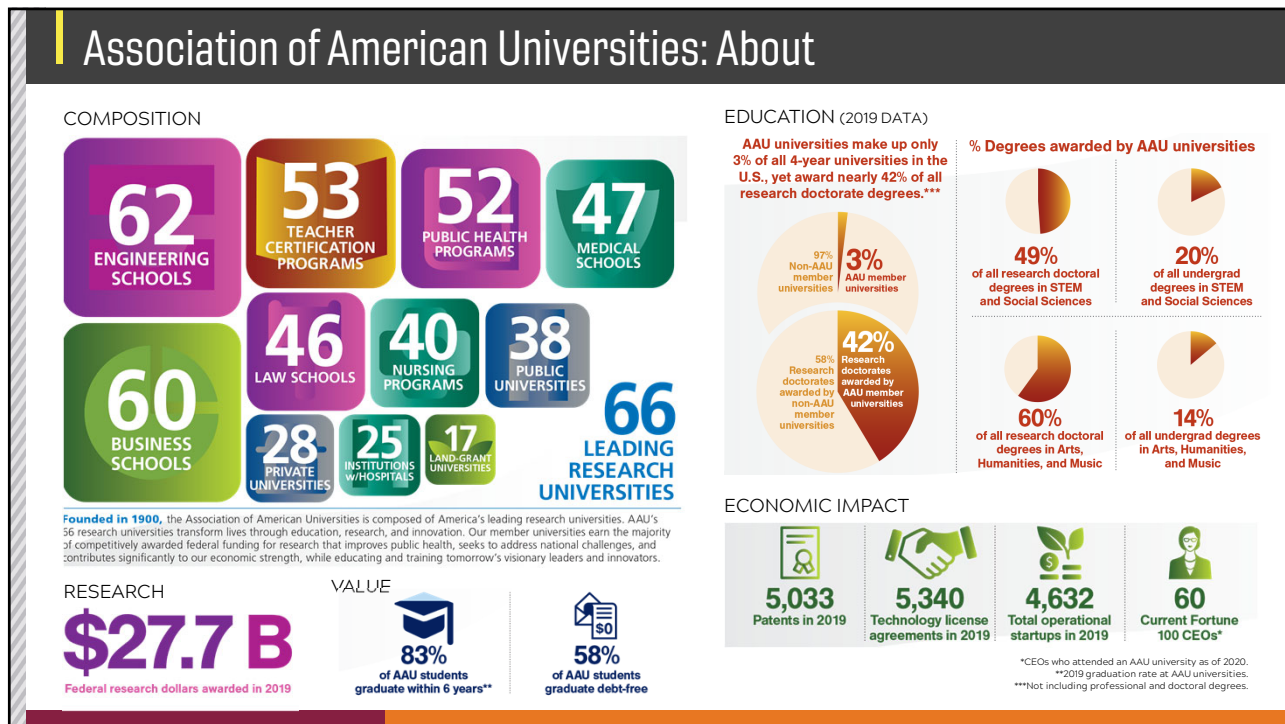
MISSION STATEMENT

Founded in 1900, the Association of American Universities is composed of America's leading research universities. AAU's 66 **research universities transform lives through education, research, and innovation.**

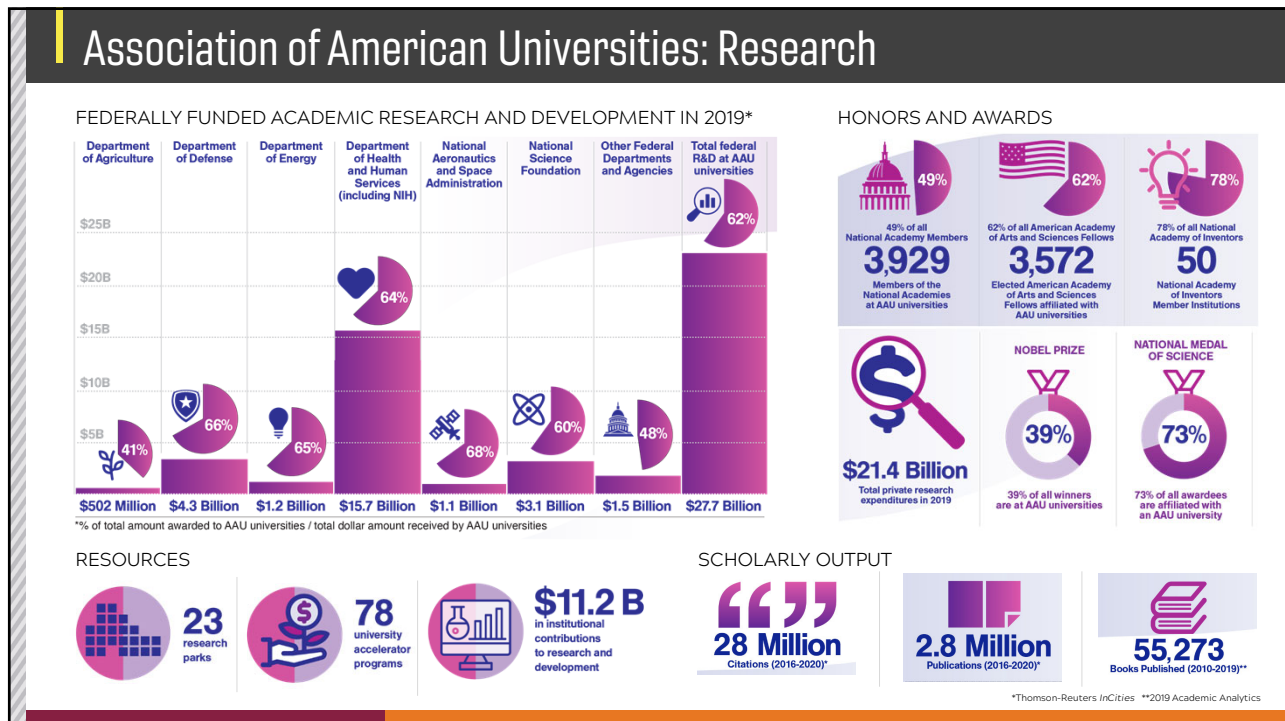
Our member universities earn the majority of **competitively awarded federal funding for research that improves public health, seeks to address national challenges, and contributes significantly to our economic strength, while educating and training tomorrow's visionary leaders and innovators.**

AAU member universities collectively help **shape policy for higher education, science, and innovation; promote best practices in undergraduate and graduate education, and strengthen the contributions of leading research universities to American society.**

2

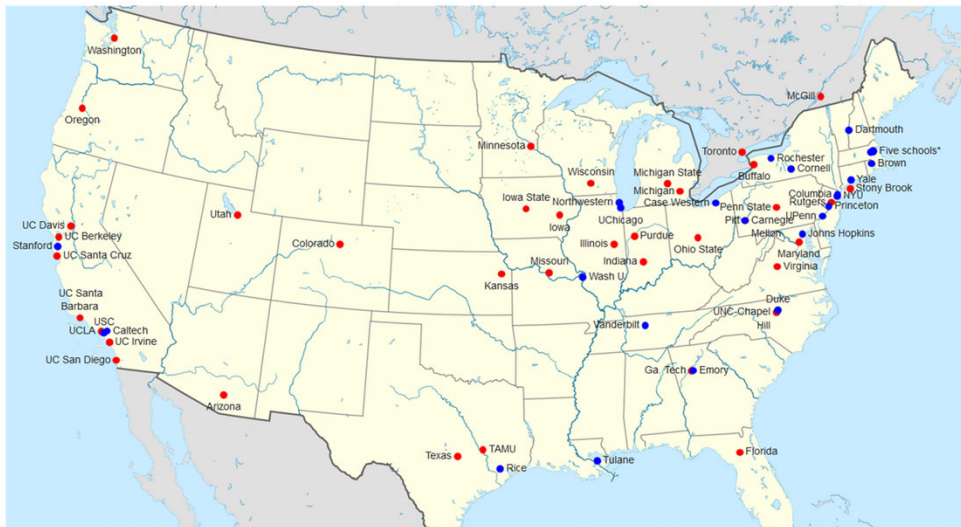


3



4

AAU Current Membership (2021)



14 land-grant
Institutions

TAMU (2001)

A map of the AAU schools, with private schools marked in blue and public schools marked in red. Five private schools in Greater Boston are not labeled separately due to space reasons: Harvard, MIT, Tufts, Boston University, and Brandeis.

5

Association of American Universities membership rules

“Like a country club or secret society, new AAU members can apply **only by invitation** and with the assent of **three-quarters of member institutions.**”

Phase I indicators

- Competitively funded federal research support
- Membership in national academies
- Faculty awards, fellowships, memberships
- Citations

Phase II indicators

- U.S. Department of Agriculture, state, and industrial research funding
- Doctoral education
- Postdoctoral scholars
- Undergraduate education

6

Changes to AAU membership

AAU membership discontinued

- Clark University (1900-1999)
- Catholic University of America (1900-2002)
- Syracuse University (1966-2011)
- **University of Nebraska - Lincoln (1909-2011)**

New AAU members since 2010

- Georgia Institute of Technology (2010)
- Boston University (2012)
- The University of Utah (2019)
- University of California, Santa Cruz (2019)
- Dartmouth College (2019)
- **Tufts University (2021)**

7

Virginia Tech's AAU strategy: a two-pronged approach



8

Growing Virginia Tech's Research and Innovation enterprise



Research = f (faculty, infrastructure, DAP, and culture)

Any measure of research enterprise (volume and impact)

Quantity and quality of faculty

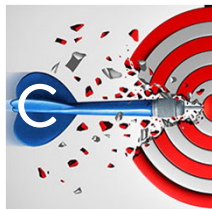
Quality of infrastructure that supports research

Diversity of academic programs (e.g., status of medical school, engineering school)

Institutional culture that values and rewards creativity, innovation, and impact

9

Communication strategy for Virginia Tech's Research and Innovation



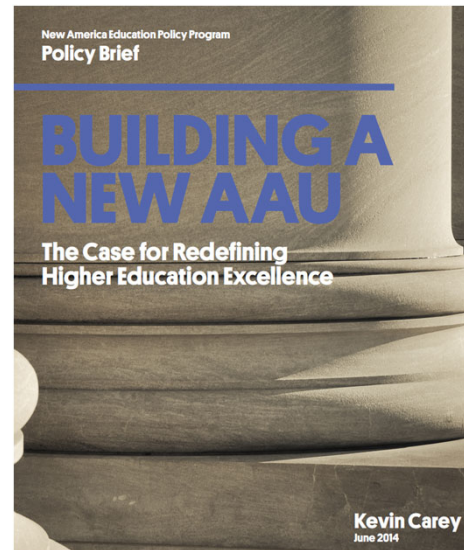
- Who should be talking?
- To whom shall we speak (audience)?
- What?
- How?
- When/how often?

10

Association of American Universities

“The AAU’s response to the shift toward openness was to fall back on its original mission of exclusivity.”

“The time has come to create a new definition of greatness in higher learning.”



11

A Roster of 'New AAU' Members

Selected from institutions with 'high' or 'very high' levels of research activity, ranked using a composite index of commitment to research, scholarship, diversity, quality, and affordability.

Institution Key:
■ AAU Founder
■ Current Member
■ New Member

Institution	Total Score	Academy Members	Admission Fees Fall 2011	Eschelon Degree 2010-11	Doctorates 2010	Faculty Awards 2010	Federal Research 2009	Minority Degree 2010-11	Low Income Students' Net Price 2010-11	Peer Reviews 2010-11	Postdocs 2009	Total Research 2009
University of Washington-Seattle Campus	14.1	102	58	7590	705	40	619,553	1,160	6,128	7,406	1,024	778,046
University of Michigan-Ann Arbor	13.2	84	41	6,553	799	50	656,216	1,055	4,778	4,456	1,047	1,007,198
University of Florida	12.8	25	43	8,685	771	22	232,737	3,074	5,778	9,857	597	592,082
The University of Texas at Austin	12.7	67	47	9,954	857	30	309,125	2,517	7,220	10,236	259	506,569
University of California-Los Angeles	12.7	91	26	7,546	748	37	463,505	1,854	8,572	9,417	1,141	889,995
University of Wisconsin-Madison	12.6	71	66	6,650	716	35	507,898	690	6,363	4,921	786	952,119
University of California-Berkeley	12.4	226	21	7,466	891	36	262,069	1,510	8,051	8,798	1,361	652,474
University of Illinois at Urbana-Champaign	12.4	59	68	7,542	765	35	288,013	1,211	7,432	6,437	506	563,710
Arizona State University	12.3	20	87	12,194	490	9	134,598	5,086	6,673	21,444	202	281,588
Texas A & M University-College Station	12.0	22	65	8,748	578	17	261,491	1,732	4,010	8,454	324	630,655
University of California-San Diego	11.9	110	38	6,356	444	33	511,428	996	8,715	10,910	1,155	879,357
The Ohio State University-Main Campus	11.6	27	65	10,291	757	21	359,820	1,193	11,683	11,854	552	716,461
University of Minnesota-Twin Cities	11.4	41	47	7,031	701	34	380,602	775	7,029	8,090	853	740,080
University of Arizona	10.8	27	75	6,195	471	12	287,889	1,741	8,297	9,679	322	565,202
University of California-Davis	10.3	36	46	6,511	480	19	295,924	1,154	8,701	10,207	692	681,618
University of North Carolina at Chapel Hill	10.2	30	34	4,654	513	32	431,837	1,233	4,101	3,775	746	646,011
University of Maryland-College Park	10.2	30	45	6,987	604	23	277,578	1,588	6,283	5,302	325	496,781
Harvard University	9.9	348	6	1,792	625	66	385,704	859	1,297	1,092	5,594	462,193
Michigan State University	9.8	7	73	8,018	505	15	164,198	913	5,569	9,250	422	573,184
Purdue University-Main Campus	9.2	24	68	7,049	618	13	175,302	593	6,980	7,183	334	453,799
University of California-Irvine	8.8	35	45	6,298	365	27	177,098	1,111	8,191	8,051	408	325,495
Georgia Institute of Technology-Main Campus	8.4	29	52	3,052	416	21	322,452	498	3,031	2,392	271	561,631
Rutgers University-New Brunswick	8.2	36	61	6,179	424	18	151,122	1,426	11,909	8,679	217	320,416
Stanford University	8.0	289	7	1,670	708	47	477,507	603	5,552	1,231	1,590	704,183
Florida State University	8.0	7	58	7,886	340	9	117,294	2,250	6,125	9,110	258	195,244
University of Colorado Boulder	8.0	29	87	5,628	317	21	239,687	548	12,181	4,695	563	288,388
University of Pennsylvania	7.7	102	12	2,891	521	34	499,498	755	6,529	1,565	1,003	726,768
North Carolina State University at Raleigh	7.6	18	54	5,182	422	11	155,518	773	4,789	5,897	264	380,571
University of Georgia	7.5	7	59	6,845	417	9	106,932	952	4,177	6,107	232	349,730
University of Utah	7.4	18	83	4,801	299	14	190,354	443	9,127	6,616	370	331,137
University of Iowa	7.0	22	80	4,543	397	14	252,336	351	9,323	4,086	354	328,901
Indiana University-Bloomington	6.9	10	72	7,155	445	8	78,498	663	3,919	6,487	143	156,966
University of South Florida-Main Campus	6.9	5	38	6,766	245	6	190,949	2,435	6,156	11,949	261	309,546
University of Illinois at Chicago	6.9	5	63	5,526	316	11	196,702	1,210	6,862	7,904	245	541,655
Columbia University in the City of New York	6.7	117	10	1,836	561	28	485,111	1,029	6,277	1,189	757	589,575
University of California-Santa Barbara	6.6	57	45	5,212	299	15	115,837	1,227	8,998	6,842	166	215,728
Johns Hopkins University	6.5	84	19	1,530	434	39	1,587,547	799	13,611	813	1,570	1,856,270
Virginia Polytechnic Institute and State University	6.3	13	67	5,205	403	11	148,411	482	8,492	4,187	215	396,681
University of New Mexico-Main Campus	6.1	4	66	3,350	190	6	135,354	1,922	6,569	8,576	480	203,769

12

OVPRI vision

OVPRI aspires to become a model service unit to move Virginia Tech's research and innovation enterprise from **excellence** to **eminence**.



13



RESEARCH AND INNOVATION
VIRGINIA TECH.

14